



# Community Safety Framework

---

June 2025



## Table of Contents

1	Acknowledgement of Country .....	2
2	About the framework .....	3
3	Guiding Principles .....	4
4	Strategic Alignment .....	5
5	Safety Trends .....	6
5.1	Crime Data .....	6
5.2	Homelessness Data .....	8
6	Community Perception .....	10
7	Key Safety Focus Areas .....	11
7.1	Wellbeing .....	11
7.2	Homelessness .....	12
7.3	Public spaces and infrastructure .....	12
7.4	Education and training .....	12
7.5	Collaborations .....	13
8	Roles and Responsibilities .....	14
9	Monitoring and Evaluation .....	15



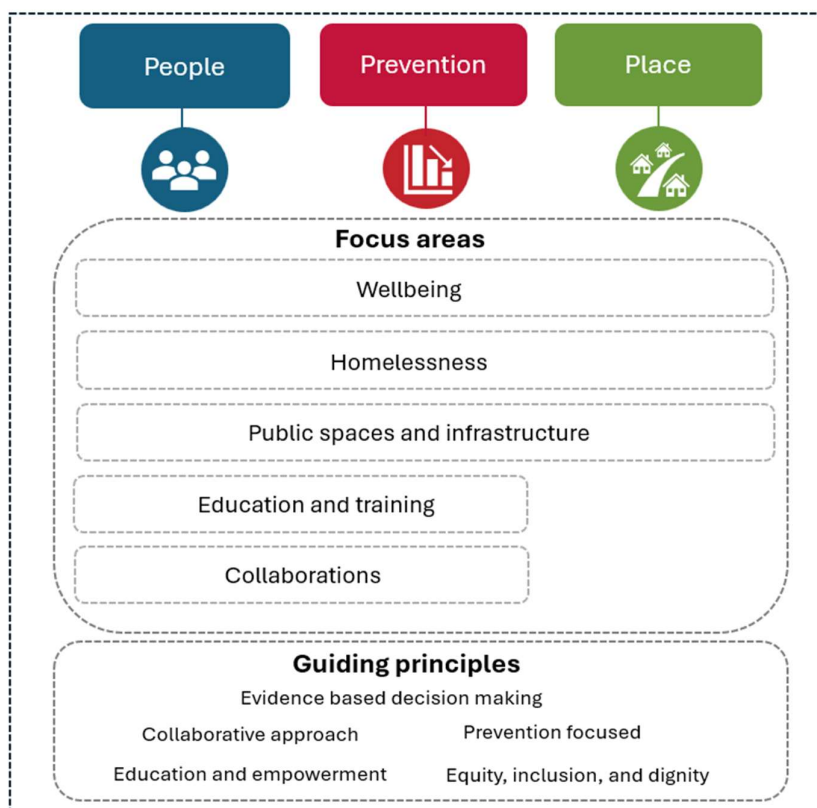
## 1 Acknowledgement of Country

The City of Subiaco acknowledges the Whadjuk Noongar people as the traditional custodians of the area. We recognise their cultural connection to the land and waterways of Subiaco and pay our respect to their continuing contribution to our City, and to Elders past and present.

## 2 About the framework

Community safety refers to the collective efforts and strategies aimed at protecting and enhancing the wellbeing of individuals and communities. The approach defined in this framework was informed by community feedback from the development of the 2025 Council Plan and 2024 MARKYT Scorecard, and local data and safety trends.

**Diagram 1: Framework overview**



Our approach to safety based on three domains —**People, Prevention and Place**.

### **People**

We work closely with residents, service providers, and government partners to co-design and deliver meaningful solutions that foster inclusivity and wellbeing.

### **Prevention**

We focus on early intervention and proactive strategies to reduce risk and address the social and environmental factors that influence safety in our community.

### **Place**

We design and maintain safe, inclusive, and accessible public spaces that foster connection, belonging, and community life. We understand that the built environment plays a vital role in shaping how people experience and perceive safety.

### 3 Guiding Principles

The guiding principles shape how we will approach safety.

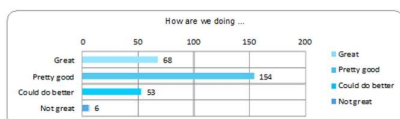
- **Evidence based decision-making:** We are guided by data, research, and community insights to ensure our safety strategies are targeted and responsive to emerging issues and the local context.
- **Equity, inclusion, and dignity:** We are committed to safety that is fair, inclusive, and upholds the dignity of all individuals. We are committed to ensuring that safety initiatives are responsive to the diverse needs of our community.
- **Education and empowerment:** We believe that a safe community is an informed and engaged community. By providing education, resources, and opportunities for active participation, we empower individuals, businesses, and community groups to contribute to safety in meaningful ways.
- **Collaborative approach:** We co-create safety solutions and support initiatives via strong partnerships with residents, business, emergency services and advocacy organisations.
- **Prevention-focused:** We take a proactive approach to community safety by addressing the root causes of harm—such as social isolation, economic disadvantage, and poor environmental design—to reduce risks and build long-term resilience.

## 4 Strategic Alignment

Local governments are required to produce a plan for the future under section 5.56(1) of the *Local Government Act 1995*. The City of Subiaco Council plan will outline community long term (10+ years) vision, values, aspirations and priorities, with reference to other local government plans, information and resourcing capabilities.

### Council Planning

#### Pillar 1 – Community wellbeing



#### City is doing well:

- ✓ Community events and activities
- ✓ Community facilities
- ✓ Safety and walkability

#### Room to improve:

- Inclusivity and diversity
- Homelessness
- Facilities for key groups – children, teenagers, seniors

The Community Safety Framework is informed by the draft Council Plan, which highlights the Community Wellbeing Pillar “of creating a ‘welcoming, vibrant and inclusive community,’ with a focus on safety, homelessness, and building resilience through partnerships with vulnerable communities.

Council Plan community feedback indicates the City is performing well in areas such as safety and walkability and has identified homelessness as an area for improvement.

This strategic direction and community insight will guide priorities and actions within the Framework.

### Integrated Planning

Community safety is broad, multi-faceted and intersects with various other strategies, plans and frameworks. While this Framework provides an overarching approach to enhancing safety and wellbeing across our local government area, other plans and supporting documents such as the legislatively required Public Health Plan, Disability Access and Inclusion Plan (DAIP), and Asset Management Plans also deliver targeted strategies that contribute to specific aspects of safety.

The future Public Health Plan will align with the WA State Public Health Plan, focusing on priorities that support community safety by addressing key social, environmental, and health factors. These include preventing injury and harm, promoting mental health and wellbeing, reducing environmental health risks, and improving Aboriginal health and cultural safety.

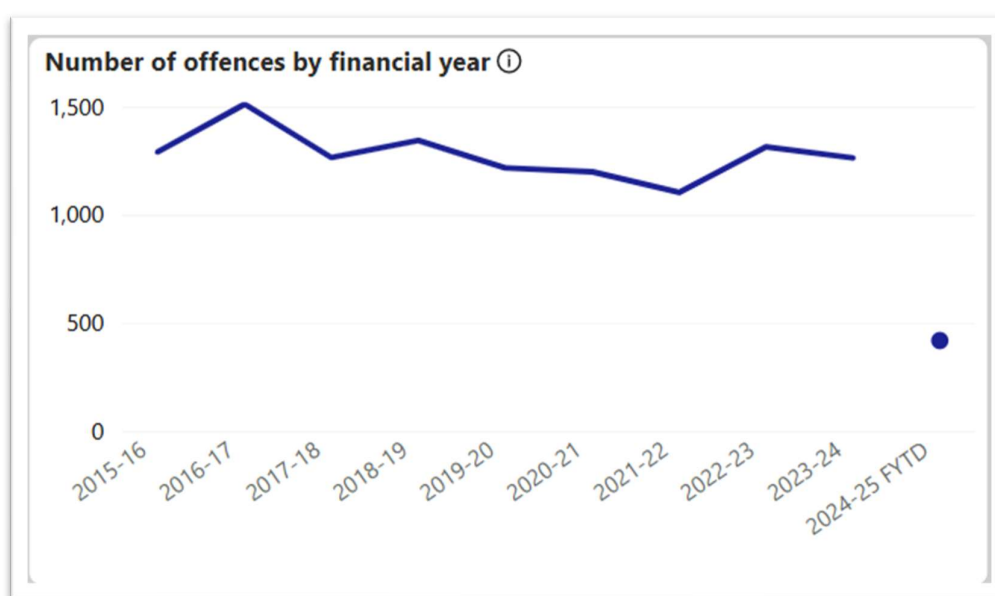
Other documents and approaches such as emergency management plans, urban design and place-making strategies play a crucial role in ensuring a safe and inclusive environment. Together, such plans work in tandem with the Community Safety Framework to deliver both a strategic and operational response to local safety challenges.

## 5 Safety Trends

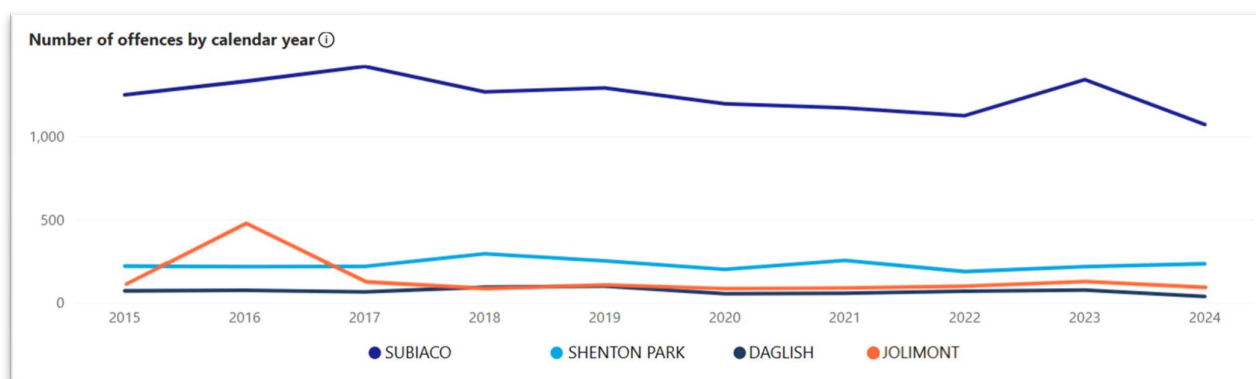
### 5.1 Crime Data

Western Australian Police (WA Police) data forecast an overall decline in crime within Subiaco (suburb), showing decreasing trend for offences like stealing, drug related incidents and non-family assaults. However, family-related violence has emerged as a significant concern. Subiaco crime statistics in Table 1 indicate that family-oriented threatening behaviour and assault are more prevalent than public antisocial behaviour. For 2022-23 and 2023-24, there was a 63% increase in family assault offences (from 38 to 62) and a 283% increase in family-related threatening behaviour (from 6 to 23). Although the individual numbers remain relatively low compared to State totals, the increase in trend should be monitored. Over the past five years, family-related offenses in Western Australia have increased by 44%, highlighting this is both a local and statewide issue, as shown in Table 2.

**Graph 1: Subiaco Suburb Annual Offence Data**



**Graph 2: Subiaco LGA Suburb Comparison Annual Offence Data**



**Table 1: Subiaco Suburb Detailed Offence History**

Type of Offence	2014-15	2015-16	2016-17	2017-18	2018-19	2019-20	2020-21	2021-22	2022-23	2023-24
Homicide	-	-	1	1	1	-	-	-	-	-
Sexual Offences	10	61	16	14	14	5	22	16	33	16
Assault (Family)	33	29	34	33	34	22	48	36	38	62
Assault (Non-Family)	49	77	51	86	66	39	33	35	29	27
Threatening Behaviour (Family)	3	31	4	2	2	1	11	3	6	23
Threatening Behaviour (Non-Family)	6	10	19	12	14	10	7	9	20	18
Deprivation of Liberty	2	-	-	-	-	-	-	1	-	2
Robbery	1	7	10	8	9	3	4	2	10	4
Dwelling Burglary	93	93	135	85	86	73	66	49	49	26
Non-Dwelling Burglary	45	57	107	76	46	65	52	41	35	37
Stealing of Motor Vehicle	23	30	22	26	28	12	25	22	22	2
Stealing	518	595	601	507	516	571	410	504	678	491
Property Damage	121	128	192	111	115	80	105	69	80	49
Arson	3	3	1	3	5	2	-	3	2	2
Drug Offences	35	48	127	64	77	99	70	38	36	27
Graffiti	10	10	4	8	7	20	7	16	10	4
Fraud & Related Offences	92	76	119	175	244	169	278	229	237	140
Breach of Violence Restraint Order	15	21	17	22	42	23	30	18	22	28
<b>Total of Selected Offences</b>	<b>1,059</b>	<b>1,276</b>	<b>1,460</b>	<b>1,233</b>	<b>1,306</b>	<b>1,194</b>	<b>1,168</b>	<b>1,091</b>	<b>1,307</b>	<b>958</b>



**Table 2: Western Australia State Crime Comparison Data**

Summary Offence Categories	2021-22 FYTD	2022-23 FYTD	2023-24 FYTD	5 year average	% Change from 5 year average
👤 Selected Offences Against the Person (excluding Family Related Offences)	26,651	29,921	31,758	25,989.8	↑ 22.2%
👪 Family Related Offences (Assault and Threatening Behaviour)	28,273	33,530	39,132	27,166.0	↑ 44.0%
🏠 Selected Offences Against Property	123,594	137,007	137,875	133,687.8	↑ 3.1%
🏠 Total Selected Offences Against Person or Property	178,518	200,458	208,765	186,843.6	↑ 11.7%
💊 Drug Offences	19,832	22,996	25,619	26,213.0	↓ -2.3%

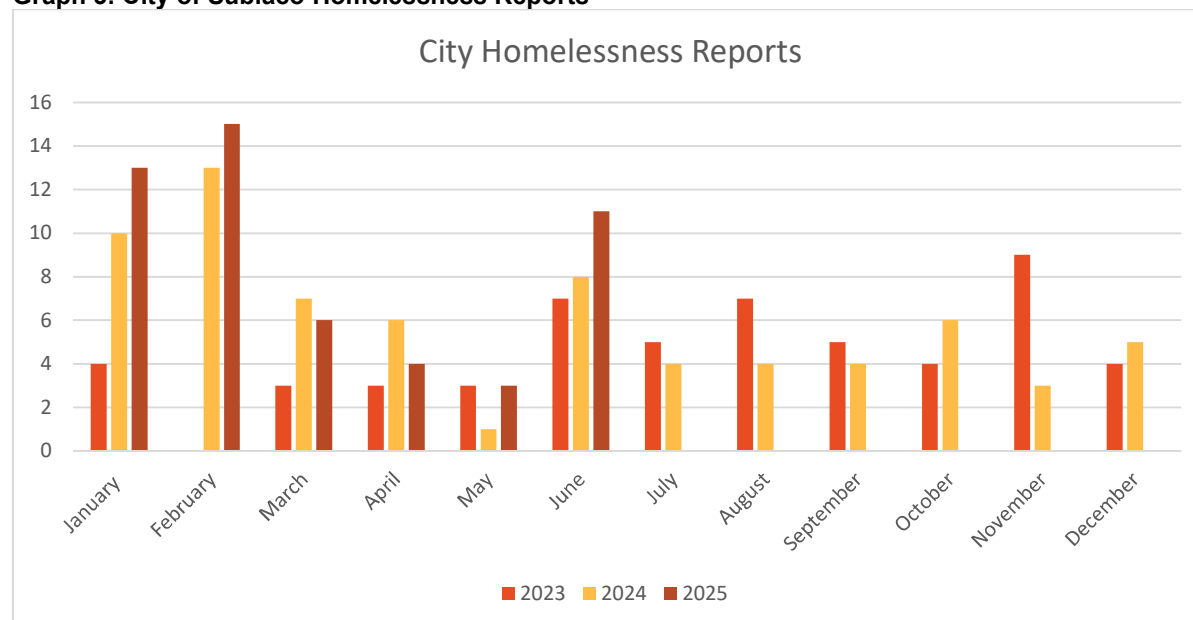
5 Year Average is the average of the year to date period for the years 2018-19 to 2022-23.

FYTD refers to the period 01 July to 30 June.

## 5.2 Homelessness Data

The City's homelessness data displayed in Graph 3, shows during the summer season the City receives an increase in homelessness reports compared to other months, and has been increasing each year.

**Graph 3: City of Subiaco Homelessness Reports\***



Data as at 18<sup>th</sup> of June 2025

The City, in partnership with the Salvation Army, has established a walk-in service and uses volunteer outreach, with increasing client numbers, engagement, and on-site support.

*Walk-in centre utilisation*

Quarterly Reporting Period: 7 December 2023 – 6 December 2024

- Client Growth:
  - Increased from **18** clients in Q1 2023-24 to **114** clients in Q1 2024-25.
- Engagements:
  - Increased from **36** interactions in Q1 2023-24 to **299** interactions in Q1 2024-25.

Volunteer outreach contacts have also increased, from 26 in 2023 to 125 in 2024. This growing demand highlights the ongoing need for coordinated outreach support and accessible services within the community.

## 6 Community Perception

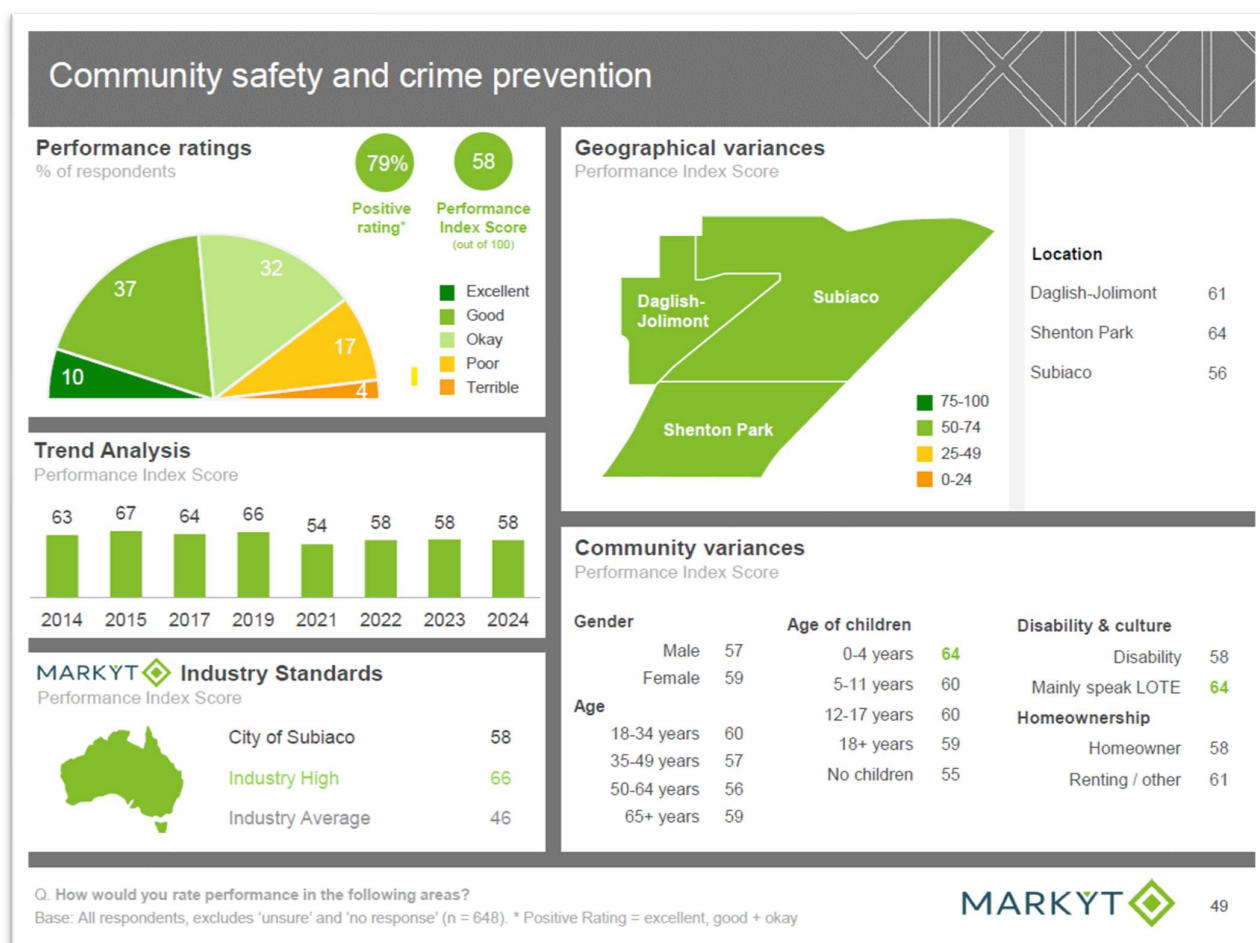
For community safety and crime prevention the 2024 MARKYT Scorecard shows a 79% positive rating, and the performance score remains steady at 58/100 (8 points above industry average) as shown in Diagram 2. Whilst the performance score was steady the positivity rating decreased by 4% and remains a high priority for the community. Across Perth more generally, the perception of community safety has decreased post-COVID.

Community perception of safety has been strongly influenced by visible signs of homelessness, antisocial behaviour, and the perceived lack of security presence at night.

Respondents identified the following actions:

- Provide more security patrols, especially at night.
- Lobby for greater police presence with faster response times –some residents have requested a police station in Subiaco.
- Address the increase in homelessness and street begging.
- Provide more CCTV and lighting in streets and public areas such as the train station, car parks and shopping/entertainment precincts.

**Diagram 2: 2024 City of Subiaco MARKYT Scorecard Data**



## 7 Key Safety Focus Areas

Our key focus areas guide what we do and how we deliver services, infrastructure, and initiatives to help create a safer community.

**Diagram 3: Relationship between key focus areas and safety domains**



### 7.1 Wellbeing

Promoting mental health, wellbeing, and strong social connections is vital to creating a sense of safety, belonging, and resilience in the community. When individuals feel supported and included, communities become more resilient, inclusive, and socially cohesive.

We will:

- Collaborate with organisations to support access to mental health support services, particularly for vulnerable groups.
- Provide training for City staff on crisis intervention and de-escalation.
- Support initiatives that reduce social isolation and promote connected communities.
- Deliver a range of community and neighbourhood activities and events.

## 7.2 Homelessness

Homelessness is a complex and multifaceted issue that impacts both individual and community safety. Responding to homelessness requires a compassionate, collaborative approach.

We will:

- Coordinate internal responses to community safety and health issues.
- Engage with Wembley Police to communicate safety concerns, obtain police feedback and report immediate incidents.
- Monitor WALGA crime statistics and reports of homelessness to identify intervention strategies.
- Deliver community educational information sessions.
- Collaborate with organisations to provide support and service enhancements.
- Attend the Perth Inner City Group Homelessness Working Group meetings.

## 7.3 Public spaces and infrastructure

Safe and well-designed public spaces play a crucial role in fostering a sense of security, inclusion, and community wellbeing. By enhancing infrastructure and urban design, we can reduce opportunities for crime and create welcoming and safe environments.

We will:

- Promote the principles of crime prevention through environmental design utilising Crime Prevention Through Environmental Design (CPTED) principles.
- Conduct safe design initiatives such as the safe active streets program.
- Improve street lighting in high-traffic areas and parks.
- Enhance pedestrian safety through accessible pathways and crossings.
- Maintain green spaces with clear sightlines and appropriate seating for safety and accessibility.
- Promote placemaking and space activation to create inviting areas, encourage social interaction and cohesion, and increase visibility and surveillance by community.
- Investigate causes of illegal dumping and develop effective strategies to reduce and prevent it.

## 7.4 Education and training

The City of Subiaco will ensure staff and the community are informed and supported to respond safely and respectfully to issues related to safety and homelessness.

We will:

- Internal promotion of who to contact to report an incident or request assistance.
- Encourage the use of Crime Stoppers WA Eyes on the Street anonymous reporting.
- Provide training on the City's role and the support available through the City and outreach services for people at risk of or experiencing homelessness.
- Promote staff participation in the City's wellness, inclusion, and WHS training programs.
- Promote the LGIS frontline safety training.



## 7.5 Collaborations

The City recognises that community safety is a shared responsibility. We are committed to working alongside key partners, agencies, and local communities to foster a safer, more resilient city.

We will:

- Strengthen strategic relationships with WA Police to address local safety concerns collaboratively.
- Actively participate in WA Police and WALGA-led initiatives, including safety campaigns and forums.
- Support and encourage community-led safety initiatives such as Neighbourhood Watch.
- Promote awareness and uptake of programs like Crime Stoppers WA and Eyes on the Street.
- Co-design and deliver prevention and support initiatives with partners—for example, domestic violence education, advocacy services, and personal safety and self-defence programs.
- Continue to offer and promote the City's free graffiti removal service for private residential and commercial properties.

## 8 Roles and Responsibilities

The City of Subiaco recognises that community safety is a shared responsibility and is committed to working alongside key partners, agencies, and the local community to create a safer, more resilient city.

### Role of Local Government:

- Deliver accessible programs and services to strengthen communities
- Planning, building and maintaining accessible, inclusive and safe community spaces and places.
- Partnering with and advocating to government agencies and service delivery partners to develop appropriate safety responses.
- Providing community guidance, education and information sources

### Role of the WA Police

- Responding to community calls for assistance
- Providing law enforcement (including Police response) for public safety and serious incidents
- Detecting and investigating offences.
- Operating via the WA Police Act 1892

### Role of State Government

- Providing the judicial processes to investigate and prosecute offenders.
- Emergency management
- Delivery of proactive community safety programs.

### Role of the Community

- Report all incidents of crime or suspicious activity to Police.
- Stay connected to neighbours.
- Stay informed about local safety and security issues.
- Undertake crime prevention strategies such as:
  - Securing home and property.
  - Avoiding leaving valuables in cars.
  - Practising general vigilance.

## 9 Monitoring and Evaluation

To track our progress and understand the impact of our key focus areas and actions, we will:

- Monitor key safety indicators such as crime statistics, reports of homelessness, and community perceptions of safety.
- Assess community satisfaction through tools like the Community Scorecard.
- Gather feedback through community education sessions, events, and direct engagement.
- Adapt strategies as needed in response to new or evolving safety concerns.

Through this ongoing monitoring and feedback process, we aim to continuously improve our approach and ensure it remains relevant, responsive, and community focused.



241 Rokeby Road, Subiaco WA 6008  
PO Box 270 Subiaco WA 6904  
08 9237 92222

[city@subiaco.wa.gov.au](mailto:city@subiaco.wa.gov.au)

[www.subiaco.wa.gov.au](http://www.subiaco.wa.gov.au)

