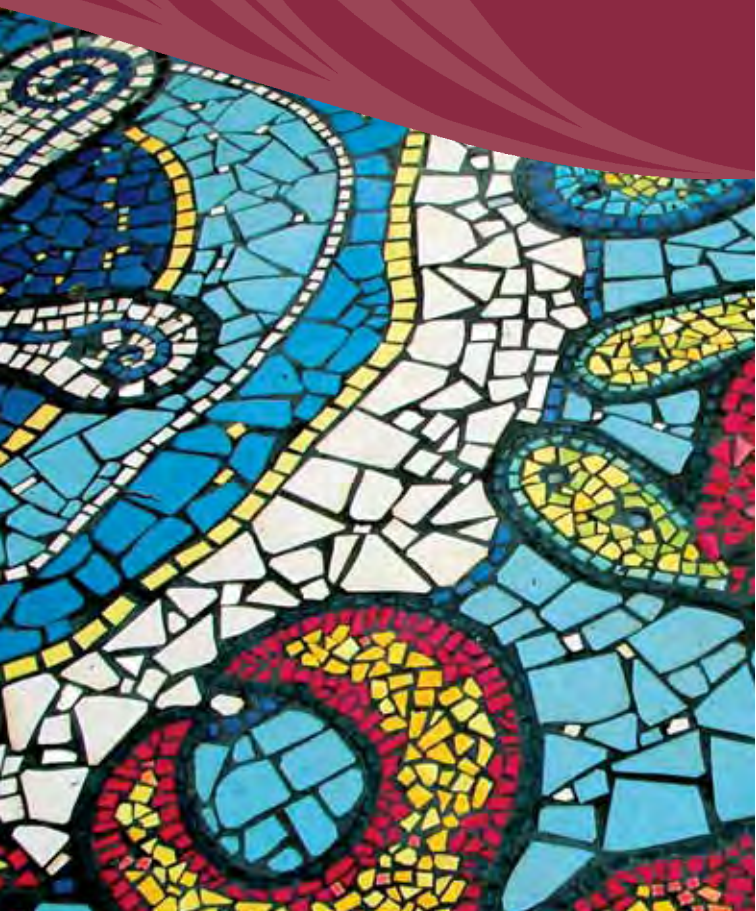


# Walking Subiaco

The City Centre

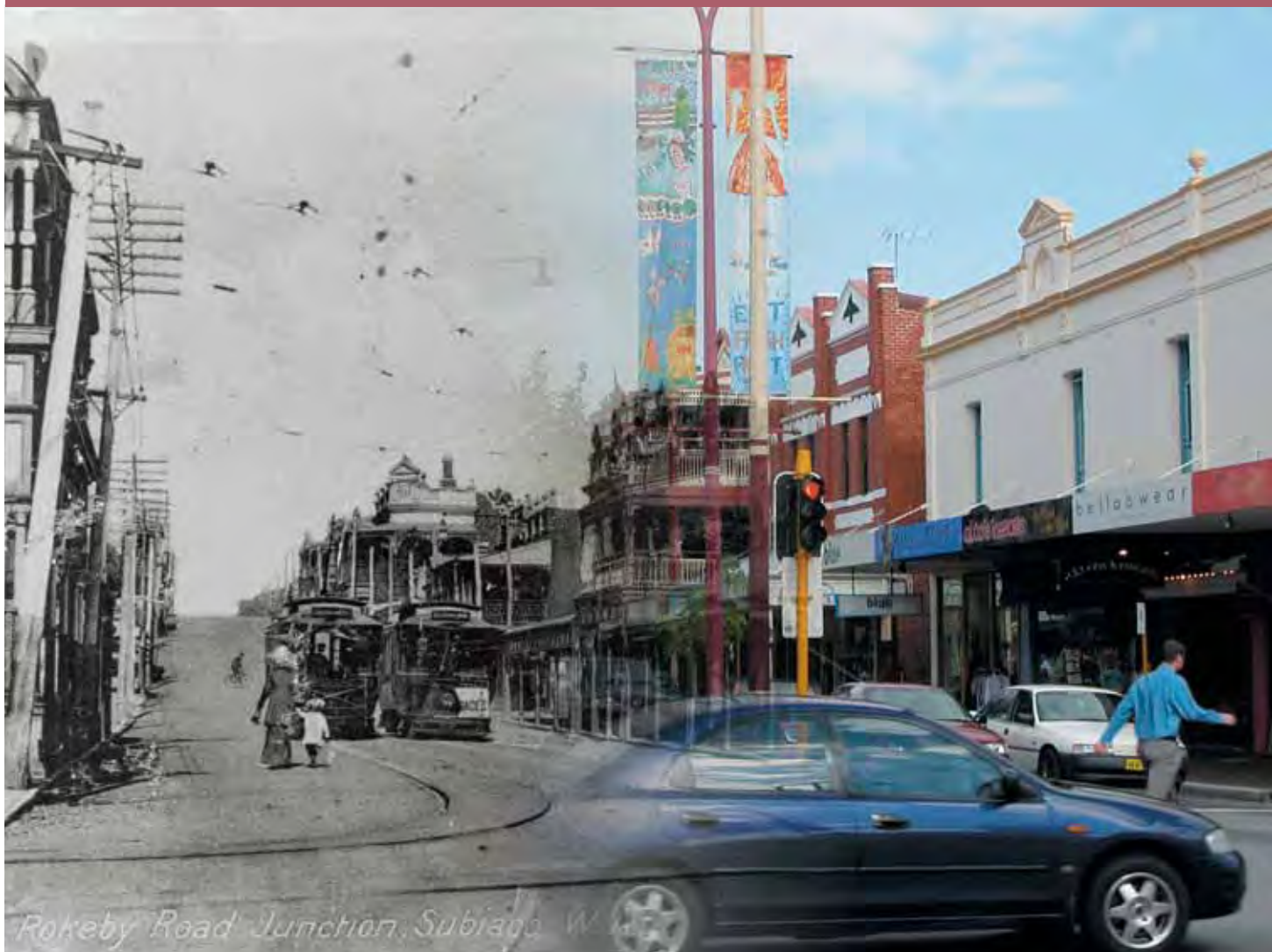


CITY OF  
SUBIACO

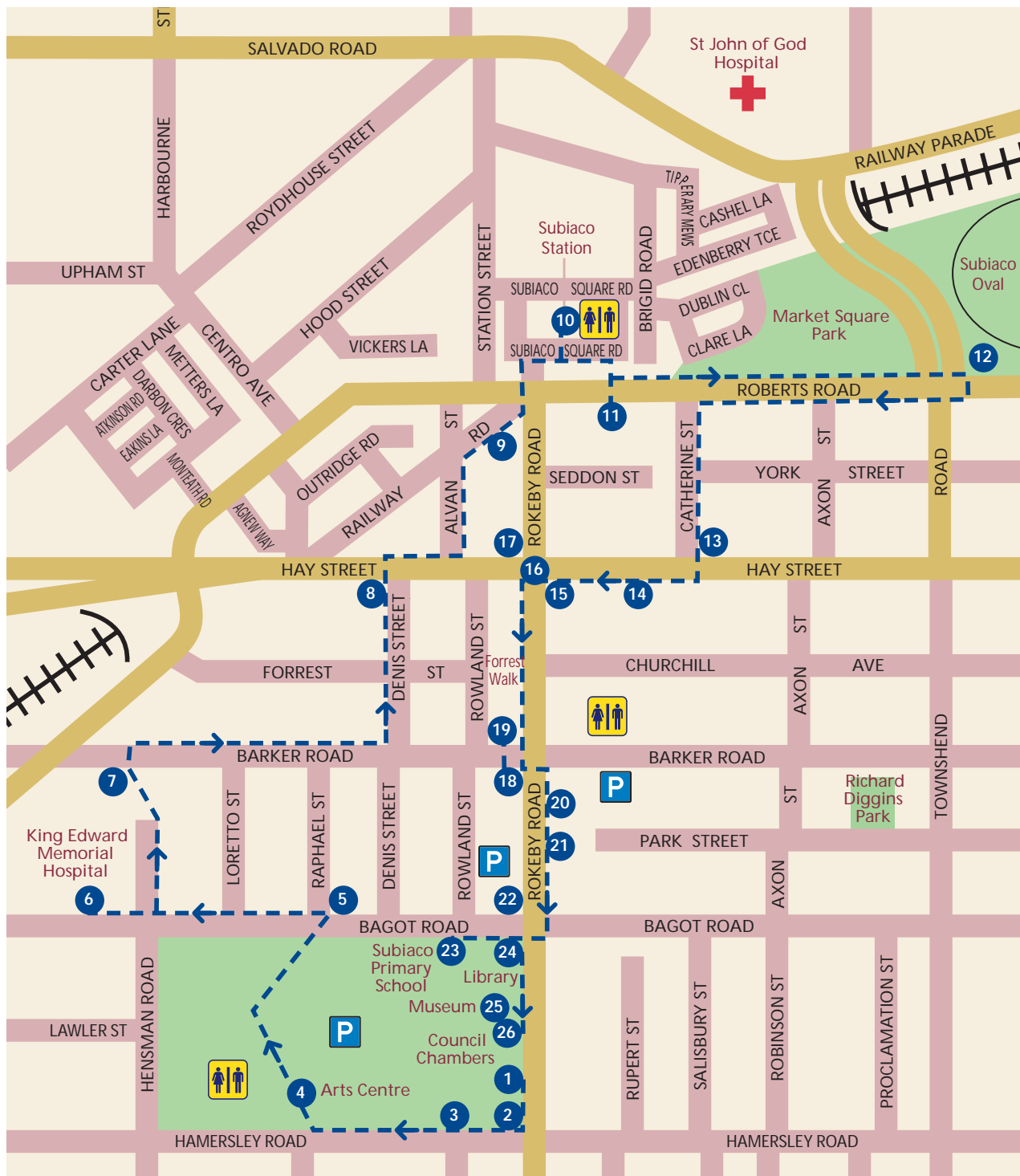


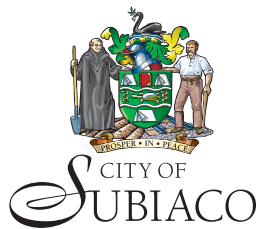
Approximately 4 kms - allow 2 hours

# Subiaco



Rokeby Road Junction, Subiaco WA





## The Subiaco Story

The City of Subiaco is part of the Swan River and Swan Coastal Plains area that has been the home ground of the Nyungah people since the beginning of time. The wetland systems were created by the movements of the Rainbow Serpent through Nyungah spiritual dreaming and are of religious significance to the Nyungah people of this area, as are other places of worship to non-Aboriginal people. Nyungah people of the Swan River and Swan Coastal Plains are the traditional land owners, keepers of knowledge, custodians and carers of the land and waterways.

In 1851 a group of Benedictine monks settled in the area, naming their monastery 'New Subiaco' after the Italian founding place of the order. They were followed by other settlers whose makeshift dwellings clustered around water sources such as the wells made by John Rowland Jones and the Whittaker Brothers. In 1886 the Jones family built the first European style house in Subiaco on Mueller Road, now called Roberts Road, near the Perth – Fremantle railway line. The railway opened in 1881 encouraging settlement which soon supported retail and industrial development, land being much cheaper in Subiaco than in Perth or West Perth.

Subiaco's population increased phenomenally in the 1890s due to a depression in the eastern states and the gold rush in Kalgoorlie. Rokeby Road, named after Lord Rokeby of Armagh, rapidly became Subiaco's focal point, and remains so.

Subiaco was proclaimed a Municipality in 1897 and became the City of Subiaco in 1952. Throughout the City, which includes the suburbs of Jolimont, Daglish, Shenton Park, Subiaco and Crawley, care has been taken in the design and preservation of parks and gardens, houses and public buildings, resulting in varied and attractive precincts.

In exploring the streets of Subiaco you will detect the strong sense of local identity that has always characterised this area.



## Welcome to Walking Subiaco

*As you leave the Subiaco Council Chambers and enter the Rankin Gardens on your right, you will pass under the shade of several century-old Norfolk Island pines.*



### Rankin Gardens

1

The Municipal Gardens were opened in 1900. In 1984 the name Rankin Gardens was adopted in recognition of Alexander Rankin, Subiaco Town Clerk and Engineer from 1898 to 1911. Rankin was an enthusiast for the planting of street trees and the development of parks and gardens. In the early twentieth century a rotunda sheltered local brass bands as they performed in the gardens.

*The Fallen Soldiers Memorial stands on the corner of Rokeby and Hamersley Roads. Known as 'The Clock Tower', the memorial is a local landmark. The clock has a mechanical action and is maintained in working order by the City. The memorial is marked with the dates 1914 – 1919. The latter date is probably given in place of the more usual 1918, due to the signing of the Treaty of Versailles in June 1919.*

### Fallen Soldiers Memorial – 1923

2

Built to commemorate the residents of Subiaco who lost their lives in the First World War, the Memorial also commemorates lives lost in subsequent conflicts. Designed by architect E H Hamilton, the building of the tower was aided by public subscription. The Subiaco Municipal Council provided the clock, made by Bensons of London, at a cost of six hundred pounds. The copper cone was built by Arcus of Subiaco.

*Before you begin to walk westwards, note the architecture of the house across Hamersley Road, No. 135, which stood on five acres of land when it was built in 1905. The roof slates and bricks which were made in France, came to Western Australia as shipping ballast. Walking west along Hamersley Road you will note the Rose Fuhrmann Centre. Rose Fuhrmann was one of Subiaco's leading citizens of the mid - twentieth century.*



3

### Rose Fuhrmann Child Health Centre and Kindergarten – 1969

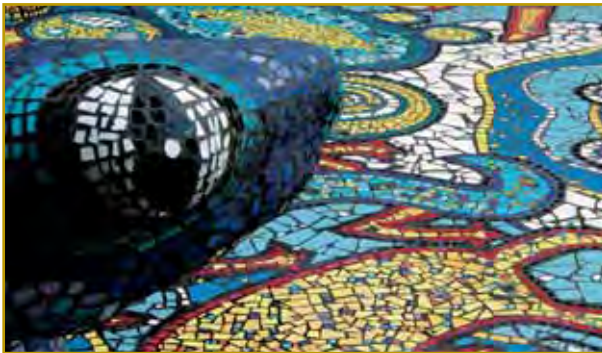
Western Australia's first woman councillor, Rose Fuhrmann served for fifteen years. She was the President of the Subiaco Infant Health Association and a founder of the Subiaco Senior Citizens Centre. The site of the Rose Fuhrmann Centre was formerly occupied by a house provided for the headmaster of the Subiaco Primary School.

*Continue along Hamersley Road past the school playing fields to the Subiaco Arts Centre, originally designed as the City Hall.*

4

### Subiaco Arts Centre

Originally designed as a City Hall by architects Hawkins and Sands in 1957, the building is a rare example in Perth of the Post-War International Style. The design was based on a strict proportioning system, resulting in an expression of simplicity and unity. The building was converted into the Subiaco Theatre Centre in 1984 and further redeveloped as the Subiaco Arts Centre in 2006. Free concerts are held on Sunday afternoons in the theatre during the winter months and in the surrounding gardens in summer. The gardens were designed by landscape architect John Oldham.



*By walking to the rear of the building via the western end you will see a mosaic sculpture, created in 2000, of Barking Gecko lizards, representing the theatre company that bears this name.*

*Walk north through the gardens to the children's playground then follow the path to Bagot Road via the north-eastern corner of the Theatre Gardens. Cross the road to the Raphael Street corner; the site of the Tigers Well camp. A plaque in the footpath describes the camp that in the 1890s extended into the present Theatre Gardens. Water was scarce, and the source known as Tigers Well served many households.*



### Tigers Well – c1895

5

Tigers Well was built to provide water for the tent dwellers who flocked to Subiaco from the eastern states. Some were bound for the goldfields of Coolgardie and Kalgoorlie. The well was named after the Tiger brand flour sacks that were sewn together to make tents to house the new settlers. One such tent dwelling was known as Tiger Skin Villa.

*By walking westwards along Bagot Road you will come to the King Edward Memorial Hospital for Women. Note the imaginative art deco detail of the entrance.*

### King Edward Memorial Hospital for Women

6

The hospital opened in 1916 in the building now occupied by the Medical Museum on Barker Road. The Bagot Road building, including the main entrance, was designed by architect Norman Bateman in 1939 and built in the art deco style. KEMH is Western Australia's largest maternity hospital.

*By walking a short distance back along Bagot Road to Hensman Road, then north through to Barker Road you will come to the Medical Museum.*

### Harvey House – 1896

7

Designed by architects Robert Haddon and George Temple-Poole, this building was originally the Subiaco Industrial School and Reformatory. In 1916 it was adapted for use as the King Edward Memorial Hospital for Women. Named after Eleanor Harvey, the first Matron, Harvey House is now the site of the Western Australian Medical Museum.

*Walk back along Barker Road turning left into Denis Street. Follow this street through to Hay Street. On your left as you reach Hay Street is the former site of Whittaker Bros. timber and hardware merchants now redeveloped as the Subiaco Village. Whittakers premises extended westwards to the railway line (now underground) and across Hay Street on the northern side.*



### Whittakers Timber Merchants – 1896

A large work force was employed on this site by Whittaker Bros. In the building boom that followed the gold rush, Whittakers produced plans for cottages and sold pre-cut lengths of timber to householders, many of whom built their own houses over weekends, hence the saying that 'Subiaco was built on a Sunday'. Whittakers staff included skilled cabinet-makers whose work may be seen at the Subiaco Museum.

*After crossing Hay Street, walk eastwards and left into Alvan Street almost to the end, then turn right into Railway Road. You will see S. CHUGG worked vertically into the masonry of a shop front.*

### Simon Chugg, Importer – 1897

Simon Chugg set up his business at this site in the former premises of his father-in-law, A E Atkins. Chugg's business supplied funeral furniture and soft furnishings. This building is one of the oldest retail outlets in Subiaco.

*Proceed north to the Railway Station by crossing Roberts Road at the traffic lights. This newly built precinct has taken the place of an industrial area that extended from the Subiaco Oval westwards into Jolimont. Several public artworks, including the station clock, were commissioned for this area. After the building of the new railway station, the signal box was donated to the Whiteman Park Museum which has a working steam train circuit.*





## 10 Subiaco Railway Station

The Perth to Fremantle rail service commenced in 1881. The first platform was built east of the present site and given the name 'Subiaco' because a group of Benedictine monks had settled nearby in 1846 and named their monastery after Subiaco in Italy, the founding place of the order. The station was later re-located near the present site, with a signal box and pedestrian overpass. The area was redesigned and the line placed underground in 1998 as part of the Subiaco Redevelopment Project.

*Moreton Bay Fig trees line the northern side of Roberts Road, originally called Mueller Road after the distinguished scientist and explorer Ferdinand von Mueller. Anti-German sentiments following the First World War caused the name change. The century-old fig trees were planted by the sons of Elizabeth and John Rowland Jones. A commemorative plaque is set into the footpath near the western end of the row of trees. The site of the Jones' home is opposite, across Roberts Road.*



## 11 The Jones House – 1886

The gracious home built on this site by Elizabeth and John Rowland Jones was the first European style house in Subiaco. The bricks were transported from Belmont via the river to the William Street jetty, by road to Thomas Street, then through the bush to the site. J R Jones, a journalist, was the state's first Hansard reporter. The house was demolished in 1959.





*Walk eastwards up Roberts Road beside Market Square Park, a site designated for use as a market square in 1922. The Park was landscaped and replanted by the Subiaco Redevelopment Authority in 2000. Ahead are the historic gates of the Subiaco Oval which are still in use.*

### Subiaco Oval Gates – 1935

12

Built to commemorate the Jubilee of King George V, the Subiaco Oval Gates were registered by the Heritage Council in the year 2000. The gates continue to serve as an entrance to the Subiaco Oval. The Subiaco Football Club's first games of Australian Rules Football were played at this site in 1896. The Oval has been the headquarters of the body now known as the West Australian Football Commission since 1936.

*Cross at the lights to the south side of Roberts Road, noting the historic house Stranraer, on the corner of Townshend and Roberts Roads, built c1900. Returning westwards along Roberts Road, cross Axon Street and turn left when you reach the Catherine Street terrace houses known as Archbishops Row, built in 1904. The origin of the name is not known.*

*Continue walking south along Catherine Street. On your left, at the junction with Hay Street, is the site of the Brown and Burns Bakery. A shopping complex now occupies the area.*

### Brown & Burns Bakery – 1897

13

The bakery was established soon after the Burns family arrived in Subiaco from Victoria. A thriving business, Brown and Burns Bakery was a major employer in Subiaco. The work force included drivers for a large fleet of horse-drawn delivery carts. In 1959 the business was taken over by the Tip-Top Bakery.

*Cross Hay Street, once known as Broome Road, turn right and walk towards Rokeby Road. On your left you will pass a store once owned by the Lums family. The family name is worked into the pattern of the floor tiles at the entrance to the shop.*

## 14 Lums Grocery & General Store



E A Lums Grocery and General Store of 433 and 435 Hay Street was owned by Emily Antoinette Lums, her husband Charles and their son Oswald, in the early to mid-twentieth century. The family originally lived at the premises but later moved to Townshend Road.

*Continue walking towards Rokeby Road. You are now following the route of the trams that ran between Perth and the Nedlands foreshore. The art nouveau style Subiaco Hotel once known as Murphy's Hotel stands on the Hay Street – Rokeby Road corner.*

## 15 Murphy's Hotel – 1898



Verandahs and balconies were once a part of the Rokeby Road and Hay Street frontage of the hotel, and a metal coated spire rose high above the existing corner tower. The spire became unsafe and was removed following the 1968 earthquake. J B Murphy, the Hotel's first publican was patron of the Subiaco Football Club in its early years.

*Tramlines were laid in 1900 from Perth to Subiaco. The service was extended in 1908 to the Swan River on lines funded by Colonel Edward Bruce, a local land developer. As the necessary road building was shared by the Municipalities of Subiaco and*

*Claremont, the tramlines became their common boundary – Subiaco to the east and Claremont, later Nedlands, to the west.*



## Perth to Subiaco Tram Service – 1900

16

The Perth to Subiaco trams turned south at the intersection of Hay Street and Rokeby Road, the terminus being at the Kings Park gates on Thomas Street. By 1908 the service extended to the Swan River via Hampden Road and Broadway, enabling children from Subiaco schools to travel by tram to the Nedlands Baths for swimming lessons. The tram service ceased in 1958.

*Diagonally opposite the hotel, where the Regal Theatre now stands, is the site of the Coliseum Picture Gardens, where outdoor movies took place behind an elegant two storey facade.*



## The Regal Theatre & site of the Coliseum Picture Gardens

17

Built in the early twentieth century, the balconies of the Coliseum Picture Gardens were clad with iron lace. An elaborate ticket box decorated with stained glass, which stood in the foyer, is preserved at the Subiaco Museum. In 1938 the art deco style Regal Theatre opened, replacing the Coliseum.

*Continue to walk south along Rokeby Road until you reach Barker Road. The Tighe's Buildings are on the south-west corner.*

## 18 The Tighe's Buildings – 1905

Behind the shop front of the Tighe's grocery store was a downstairs parlour dominated by a large carved fireplace, decorated with lead-lighting and glazed tiles. The fireplace now stands in the Subiaco Museum.

*Walk a short distance westwards along Barker Road to Rowland Street, site of the first underground placement of power lines in the City of Subiaco.*

## 19 Rowland Street Underground Power Project – 1982

Rowland Street, between Barker Road and Hay Street, became the first street in Subiaco to have overhead electrical power lines laid underground. This program was initiated by the Town Clerk of the City of Subiaco, Mr J F R McGeough and has been extended throughout the Municipality. It was the forerunner of the State Underground Power Program which began in 1996.

*Return to the corner of Barker and Rokeby Roads. Cross Rokeby Road to the eastern side and then walk southwards. King's Hall at No.140 now houses a retail business. On entering the building you will see that the Hall's ornate ceiling, light fittings and stage are preserved.*

## 20 King's Hall – 1902

Privately owned, King's Hall was the social centre of Subiaco in the first half of the twentieth century. It was the venue for balls, concerts and events such as the reception that marked the end of the first World War. The Timewell family's clothing store occupied the building from 1952 until 2000.

*As you walk further up the hill, you will see in the open space next to the Post Office, a public art piece in the form of a large earth coloured ceramic snake set into the footpath.*

## 21 The Ceramic Snake – 1997

The artwork on the tiles represents aspects of the local history of Subiaco including Aboriginal and European elements. The tiles were made by students from Subiaco, Jolimont and Rosalie Primary Schools and Perth Modern School, with assistance from artists Jenny Dawson and Sandra Hill. Sandra researched the Nyungah Aboriginal history of the Subiaco area for the project. Details of the project are written into the artwork at its eastern end.

*Doyle Court is at the junction of Rokeby and Bagot Roads. The building is best viewed from the eastern side of Rokeby Road*



## 22 Doyle Court – c1904

The building is named after Henry Doyle, elected as the first Mayor of Subiaco in 1897. Doyle, a builder, was responsible for the construction of the Subiaco State School, Subiaco's first Post Office, the Presbyterian Church on Bagot Road and many houses.

*From Doyle Court, cross Bagot Road and walk a short distance westwards to the gates of the Subiaco Primary School. A plaque is set into the footpath to the right of the gateway.*

## 23 Subiaco Primary School – 1897

The school opened on 12 May 1897 with 400 students. The first Headmaster was Mr. Sidney Grace. The school was badly damaged by fire soon after the opening and fire marks can still be found on the front wall. By 1900 it had been divided into a senior school and an infant school. An intermediate school was later built on the Hamersley Road side of the school grounds.

*Return to the corner of Rokeby and Bagot Roads, site of Subiaco's first Post Office and now the Evelyn H. Parker Library.*



## 24 Evelyn H. Parker Library – Site of Subiaco Post Office – c1900

In 1926 the Post Office moved to a new site on Rokeby Road and the original building became the Library. In 1971 it was replaced by the present building, named after Miss E H Parker, Mayor of Subiaco from 1974 to 1977. Miss Parker was Western Australia's first woman mayor and a teacher at Subiaco Primary School from 1952 to 1967. Large public artworks by Shaun Tan hang in the Library.

*Set back between the Library and present Council Chambers is the Museum, the only remaining original Municipal building in Subiaco.*

## Subiaco Museum – 1911

25

The Museum was built for use as offices by the local Board of Health and later occupied by the Subiaco Municipal Electric Light Supply. In 1923 it was converted for use as an electrical sub-station, when Subiaco ceased generating power at its Axon Street power station and commenced drawing power from East Perth. In 1975 it opened as the Subiaco Historical Society Museum.

*In front of the Museum close to Rokeby Road stood the Fire Station and the original Council Chambers. The site is marked by a plaque set into a large boulder.*



## Site of the Subiaco Municipal Council Chambers – 1899

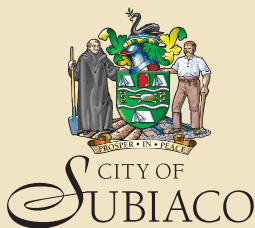
26

The first municipal building in Subiaco was neo-classical in style and accommodated the Council Chambers and Offices from 1899 to 1968. The building also housed the Subiaco Literary Institute until 1926. The building was demolished in 1971. The Subiaco Fire Station stood adjacent to the Council Chambers on the northern side from 1901 until 1926.

*At this point the City Centre walk concludes. The City of Subiaco trusts that in Walking Subiaco you have enjoyed the past and present of this unique locality in Perth, Western Australia.*



Reference: Ken Spillman, *Identity Prized: A History of Subiaco*, University of Western Australia Press, 1985.



241 Rokeby Road SUBIACO WA 6008

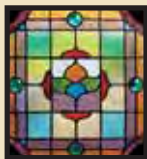
PO Box 270 SUBIACO WA 6904

Telephone: 08 9237 9222

Facsimile: 08 9237 9200

Email: [city@subiaco.wa.gov.au](mailto:city@subiaco.wa.gov.au)

Website: [www.subiaco.wa.gov.au](http://www.subiaco.wa.gov.au)



## SUBIACO MUSEUM

239 Rokeby Road, Subiaco

For opening hours, visit [www.subiaco.wa.gov.au](http://www.subiaco.wa.gov.au)

Groups welcome by appointment

For enquiries please call 9237 9227

Subiaco is easily reached by train or bus from Perth and Fremantle. Parking is available off Bagot Road in the Rowland Street and Theatre Centre car parks.

k2d-27106-06

Persons using this walking guide do so at their own risk.